

An aerial photograph showing a large area of deforestation. A wide, winding dirt road cuts through a dense green forest. Several yellow excavators and white trucks are visible on the road, indicating ongoing construction or land clearing work. The background shows a vast expanse of forest, with some distant hills and a body of water visible under a cloudy sky.

RESCUE LAST CLUSTER ORANGUTAN IN NORTH SIDE BENGALON FRAGMENTED FOREST

Presented by
Paulinus Kristianto

Date:
Nov 10, 2025



◆ BACKGROUND

This rescue operation is carried out due to the loss of orangutan habitat caused by extensive land clearing for oil palm plantations and mining activities. Only 21 small forest fragments remain, ranging from 2-3 hectares and up to 5 hectares, which no longer provide sufficient natural food sources. As a result, orangutans are forced to leave the forest and feed on oil palm fruit, increasing the risk of conflict. The remaining fragments lie along the boundary between PT. BPN and PT. KPC, creating a narrow, isolated area that traps orangutans without any natural corridor for movement. Rescue intervention is urgently needed to save the individuals still surviving in these highly fragmented habitats.

**THERE IS NO FOREST
LEFT**

2014

2025

PT. BPN

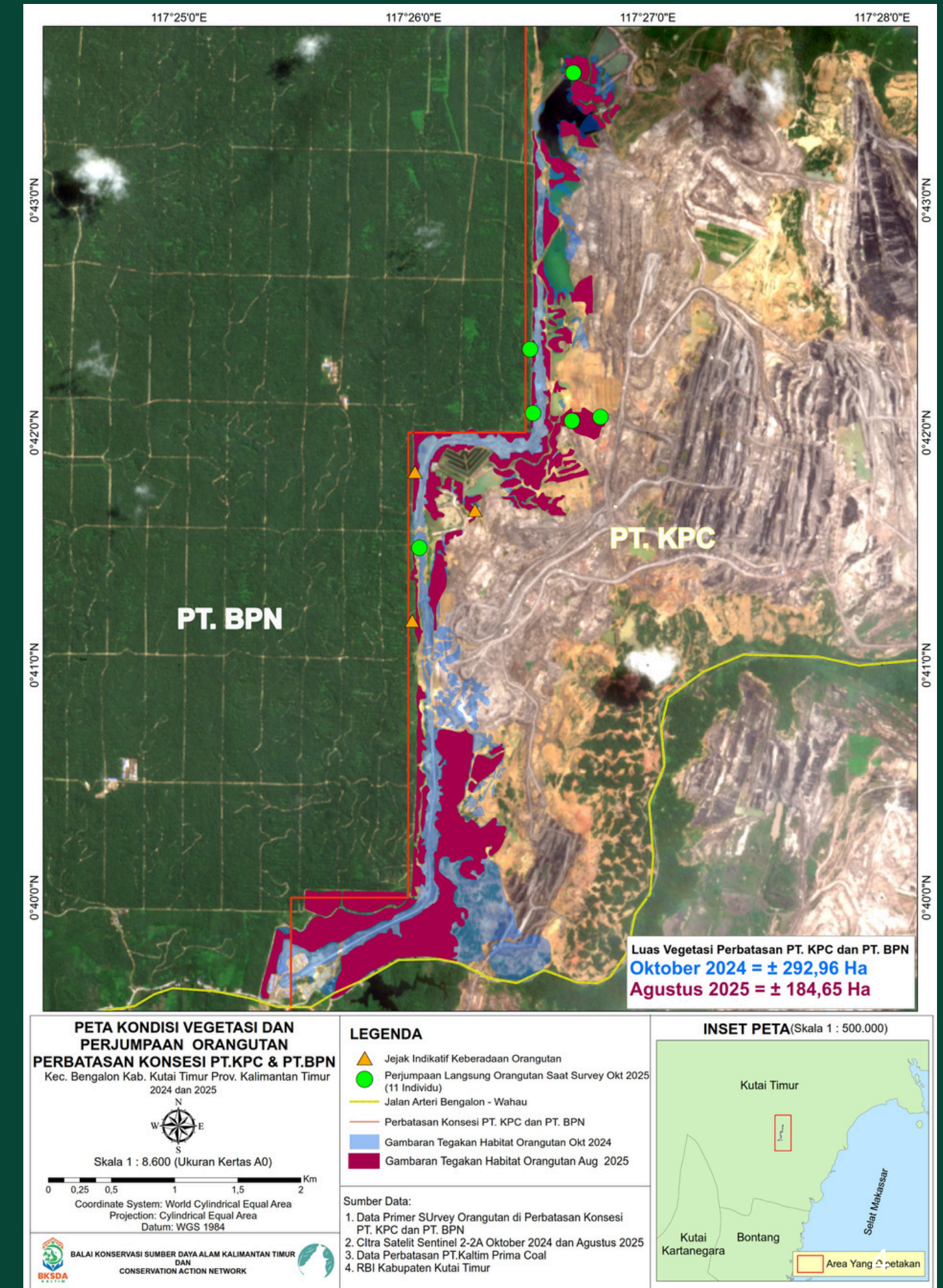
PT. KPC



LAST UPDATE

1. October 2025 field survey by BKSDA Kaltim, CAN, and PT BPN revealed critical findings.
2. 11 Orangutans trapped in fragmented vegetation between mining concessions (PT KPC & PT BPN). 14 Orangutan trapped in fragmented forest in mainroad
3. Satellite analysis (Sentinel-2):
 - Oct 2024 = 293 ha forest
 - Aug 2025 = 185 ha (↓ 37% loss)
4. Immediate risk of starvation, isolation, and human–wildlife conflict.

Location: Bengalon, East Kalimantan



A low-angle photograph of two orangutans in a large tree. One orangutan is on the left, hanging from a branch. The other is on the right, reaching up towards the top of the frame. The tree has many green leaves and thick brown branches. The sky is a clear, pale blue.

FIELD OBSERVATIONS

Total Recorded: 25 individuals (Oct 27–30, 2025)

- 5 Adult Males
- 8 Adult Females with Infants (including 1 with twins)
- 7 Juveniles & Sub-adults
- 5 Unidentified (observed via nest & feeding traces)

Clustered between open-pit areas, reclaimed zones, and small forest patches.



A low-angle photograph of an orangutan climbing a large tree trunk in a jungle. The orangutan is positioned on the right side of the frame, reaching up with its right arm. The background is a bright blue sky with scattered white clouds. The tree's bark is light-colored and textured, with green leaves visible at the top and bottom edges of the frame.

OUR PLAN

Santa's Jungle Mission 2025

Step

01 Pre-Rescue

The team verifies reports and conducts a quick field assessment to confirm the orangutan's condition and the situation on site. BKSDA and the medical team then prepare the capture strategy and all necessary equipment to ensure a safe operation.

This step already done by BKSDA, CAN and Ecositrop

02 Field Rescue

The veterinarian sedates the orangutan in a controlled manner, while the team secures the area and performs a brief medical check. The rescued individual is then carefully placed into a transport cage for evacuation.

This team will arrange by BKSDA Vet support by our vet and technical team

03 Release and Monitoring

The orangutan is taken either to a rehabilitation center or directly to a release site, depending on its condition. After observation and readiness assessment, the orangutan is released into a safe habitat and monitored to ensure proper adaptation.

Release area will be in Busang and Karaitan

Orangutan Rescue Budget Summary



Total €21,000

Transportation – €6,000

Covers fuel for 4WD vehicles and boats, vehicle rental, and all inter-location travel required for the rescue operation.

Team Logistics – €6,400

Includes field rations, drinking water, field supplies, technical consumables, and daily operational needs for the rescue team throughout the mission.

Accommodation – €2,500

Covers lodging, basecamp facilities, and essential utilities required to support team operations in remote field locations.

Local Workforce Support – €2,100

Honoraria for local workers, porters, field assistants, and community-based support personnel contributing to logistics and field mobility.

Medical and Equipment Costs – €4,000

Includes veterinary medicines, anesthesia supplies, medical consumables, transport cages, safety equipment, and emergency treatment materials for the rescued orangutan.

